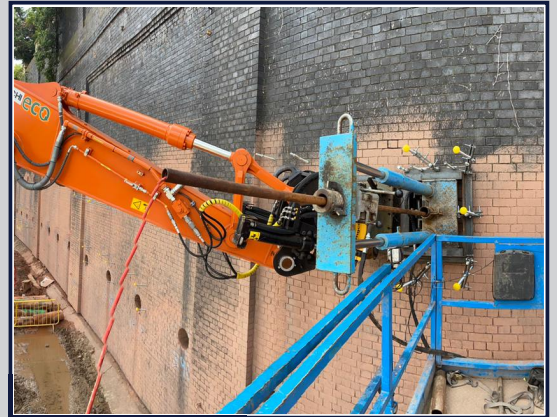


CPT INCLINED RAMS (CPT 018)

CPT 018 is a 10 Tonne set of CPT rams which are mounted on a bespoke, adaptable frame for testing at various inclined angles. The rams can be mounted on either an excavator using a bolt-on hitch or fixed to a concrete slab or wall for testing. The frame can be easily modified to set the rams at any angle required to enable us to complete tests at inclined angles.

CPT RIG DETAILS

DRIVE SYSTEM	HAND PORTABLE or EXACATOR MOUNTED
TOTAL WEIGHT	35KG
CPT RAM THRUST CAPACITY	10 TONNES
MAXIMUM PENETRATION	10-20M
PERFORMANCE RATES	2-4 LOCATIONS A DAY
TYPICAL SITES FOR THIS RIG	EMBANKMENTS, UNDERNEATH EXISTING STRUCTURES, TUNNELS, WALLS



CPT RIG DIMENSIONS

